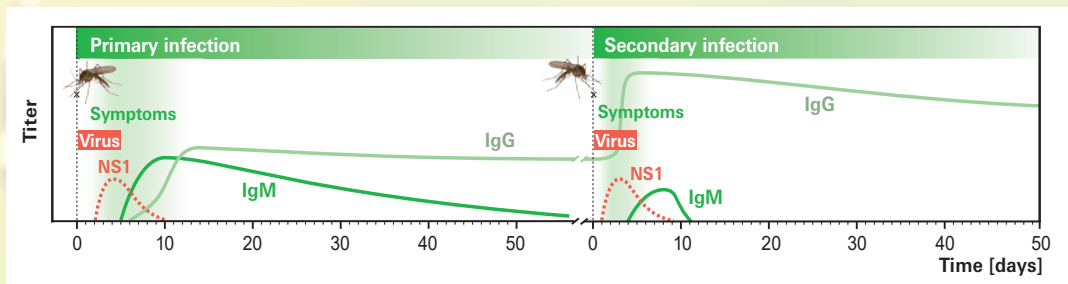




Tests for dengue virus infections and other tropical diseases

Reliable diagnostics of dengue virus infections in all disease stages



Antigen detection

- **Dengue Virus NS1 Antigen ELISA (types 1–4)**

Detection of the viral protein NS1:
Early marker for acute infections – positive laboratory results already at the first symptoms!



Antibody detection

- **Anti-Dengue Virus NS1 Type 1–4 ELISA (IgG)**
- **Anti-Dengue Virus Type 1–4 ELISA (IgG, IgM)**
- **Anti-Dengue Virus IIFT (IgG, IgM)**
- **Flavivirus/Arbovirus IIFT Mosaics (IgG, IgM)**

Identification of acute and past infections
Screening and investigation of cross reactions

Broad portfolio for the diagnostics of other tropical diseases

Pathogen	ELISA	IIFT
Chikungunya virus	■	■
Crimean-Congo fever virus	■	
<i>Echinococcus</i> ¹	■	
Hantavirus ¹	■	■
Japanese encephalitis virus	■	■
<i>Leishmania donovani</i>		■
Mayaro virus	■	
MERS coronavirus (MERS-CoV)	■	
<i>Plasmodium</i>	■	
Sandfly fever virus	■ ²	■

Pathogen	ELISA	IIFT
SARS coronavirus 2 (SARS-CoV-2)	■	
<i>Schistosoma</i>	■	■
<i>Strongyloides</i>	■	
TBE virus	■	■
<i>Toxocara canis</i> ¹	■	
<i>Trypanosoma cruzi</i>	■	
Usutu virus	■	
West Nile virus	■	■
Yellow fever virus		■
Zika virus	■	■

¹immunoblot also available, ²only Toscana virus available

Find out more at www.euroimmun.com
or contact us directly at infection-pm@euroimmun.de

