



## Sprinter XL

### Flexible processing of immunofluorescence assays

#### Ideal for medium to high throughput

The Sprinter XL is a flexible system for fully automated processing of immunofluorescence assays (IFA) with up to 30 slides and 240 samples in one run – adjustable to different laboratory requirements and assays. It provides identification, dilution and transfer of samples and performs all washing and incubation steps.

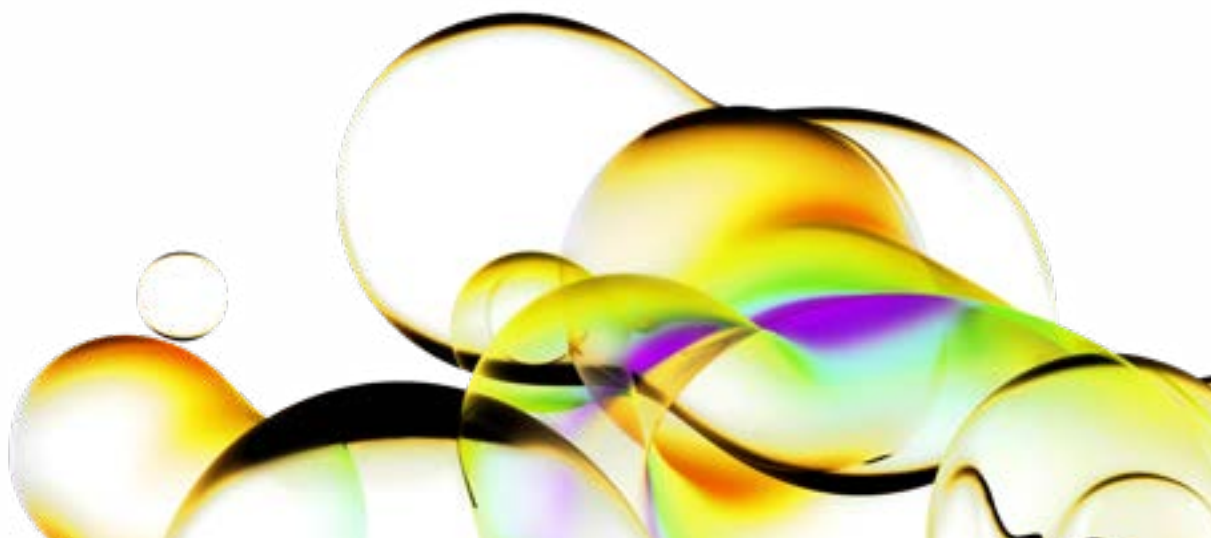
Using immunofluorescence tests from Euroimmun in combination with the Sprinter XL enables an especially convenient, fast and at the same time safe operation in routine diagnostics. This is ensured by the barcode reader for sample identification (integrated as standard) and the fully automated identification of slides via matrix codes (optional).

On top of that, Euroimmun offers you excellent service.

We are your contact for complete solutions, from test systems to instruments and software for your diagnostic laboratory.

#### Features

- Fully automated IFA processing for medium to high throughput with minimal manual input
- Excellent performance due to four washable pipetting needles, two independent robot arms and optimal workflow calculation
- User-friendly data communication with a laboratory information system (LIS) or with EUROLabOffice 4.0
- Convenient and safe operation via the user-friendly graphical interface and low-maintenance hardware



System	
Capacity for samples	up to 240 samples (outer diameter 10–16 mm)
Capacity for tests	30 slides or 6 ELISA plates, resp.
Capacity for reagents	49 calibrators/controls, 9 sample buffers, 12 secondary reagents
Dilution positions	e.g. 162 screening dilutions, 192 titer dilutions (depending on the instrument configuration)
Barcode recognition	automatic for sample tubes, optional for slides
Incubator unit	up to 4 heatable positions for 5°C above room temperature (RT) to 37°C
Pipetting unit	
Needles	4 washable needles with capacitive liquid level detection
Volume	5–1000 µl, in 1 µl increments
Accuracy	VC < 6 % (< 5 µl); CV < 5 % (> 5 µl)
Washer unit	
Washing method	flooding of the slides (IFA), washing of the single positions (ELISA)
Wash head	8-fold, 4 different buffers to be selected via the software
ELISA reader	
Number of channels	8
Measurable wavelength	400–800 nm
Filter set	405 nm, 450 nm, 492 nm, 620 nm
Features	
Operating system	Microsoft Windows 10 Enterprise 2019 LTSC (64 bits)
Bidirectional communication	ASCII, XML or HL7
Connection	USB 2.0
Power supply	110–240 V, 500 VA, 50/60 Hz
Dimensions/Weight	119 cm × 85 cm × 85 cm (WxDxH) / approx. 150 kg

Find out more about IFA automation at  
[www.euroimmun.com](http://www.euroimmun.com)  
or contact us directly at  
[www.euroimmun.com/contact](http://www.euroimmun.com/contact)

