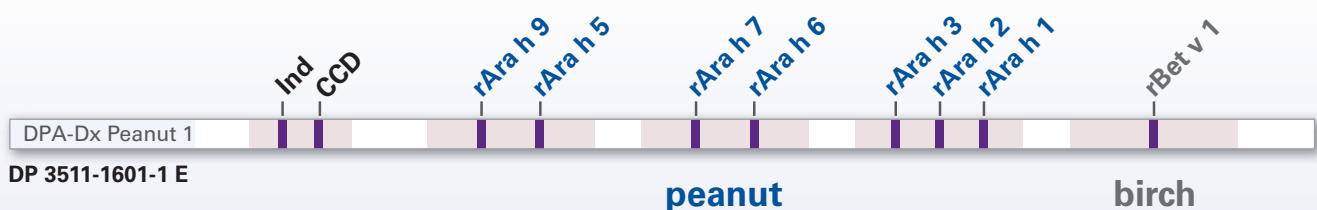
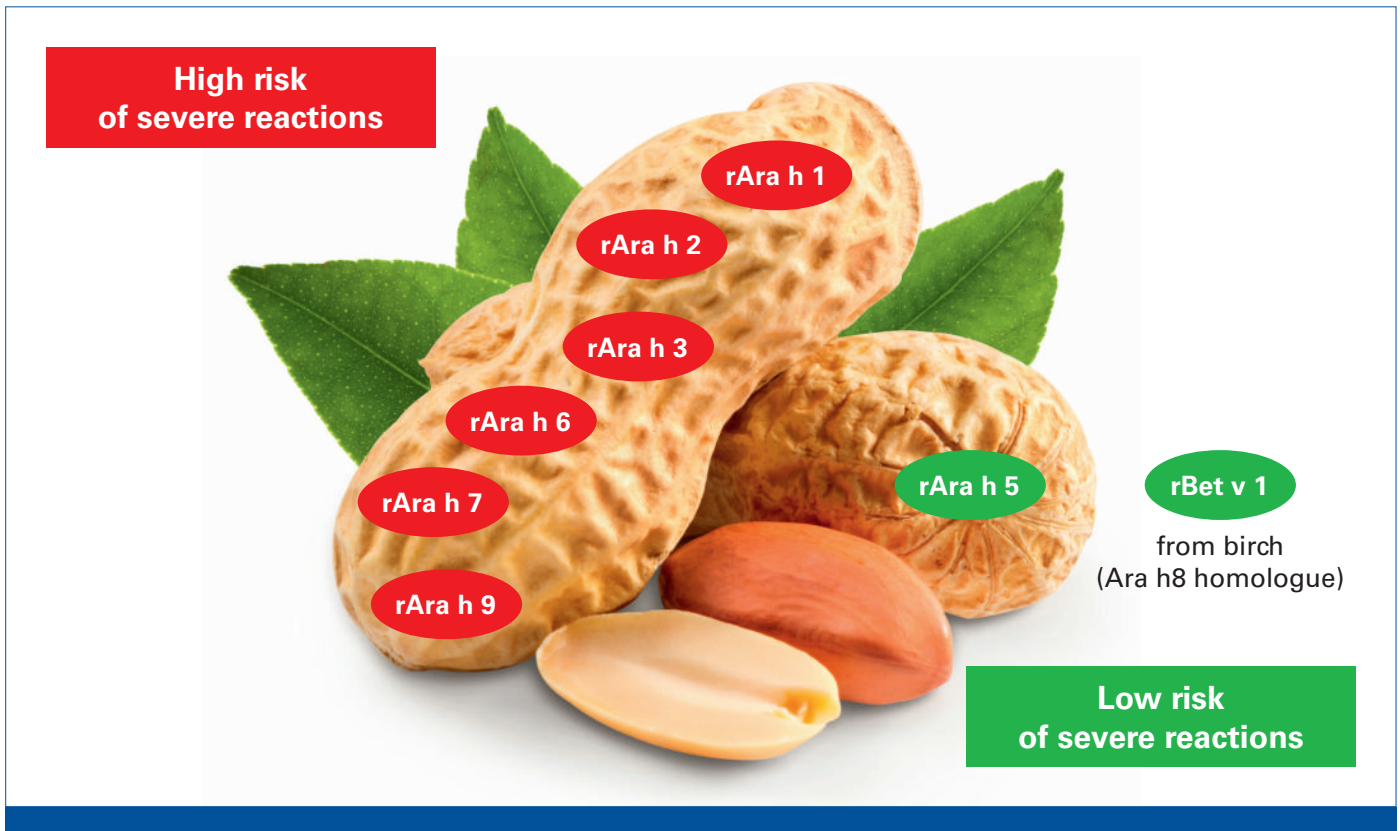




First component-based multiparameter test for peanut allergy

# EUROLINE DPA-Dx\* Peanut 1

Worldwide unique features **rAra h 5** & **rAra h 7**



## Precise analysis for optimal patient management

- Differentiation between true peanut allergy and pollen-associated cross reactions
- Sound risk assessment for severe reactions
- Targeted dietary advice in sensitisations to low-risk components (rAra h 5 & rBet v 1/rAra h 8)
- Small amount of serum (100–400 µl) – ideally suited for pediatrics

\* Defined partial allergen diagnostics